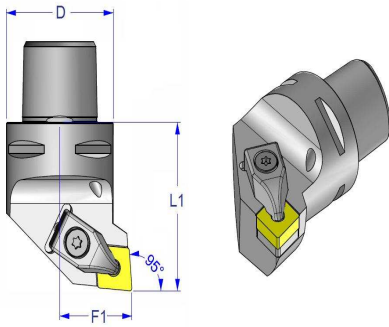


HSK-T und Capto-Katalog - D-Klemmung

DCL..



Schnittstell	Artikel-Nr.	F1	L1	D
C4	STS-C4-DCLNR/L 27050-12	27	50	40
C5	STS-C5-DCLNR/L 35060-12	35	60	50
C6	STS-C6-DCLNR/L 45065-12	45	65	63
HSK-T63	STS-HSK-T63-DCLNR/L 45065-12	45	65	63

E-Teile

KD2222

Klemme

M4,5X12-T15

Schraube

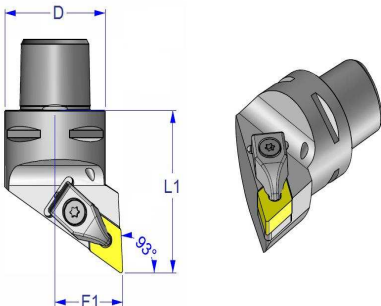
CN12T3-D

Unterlage

KS 1111

Schlüssel

DDJ..



Schnittstell	Artikel-Nr.	F1	L1	D
C4	STS-C4-DDJNR/L 27055-15	27	55	40
C5	STS-C5-DDJNR/L 35060-15	35	60	50
C6	STS-C6-DDJNR/L 45065-15	45	65	63
HSK-T63	STS-HSK-T63-DDJNR/L 45075-15	45	75	63

E-Teile

KD2222

Klemme

M4,5X12-T15

Schraube

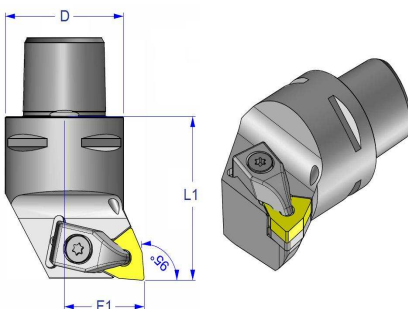
DN15T3-D

U-Platte

KS 1111

Schlüssel

DWL..



Schnittstell	Artikel-Nr.	F1	L1	D
C4	STS-C4-DWLNR/L 27050-08	27	50	40
C5	STS-C5-DWLNR/L 35060-08	35	60	50
C6	STS-C6-DWLNR/L 45065-08	45	65	63
HSK-T63	STS-HSK-T63-DWLNR/L 45065-08	45	65	63

E-Teile

KD2222

Klemme

M4,5X12-T15

Schraube

U-WN08T3-S

U-Platte

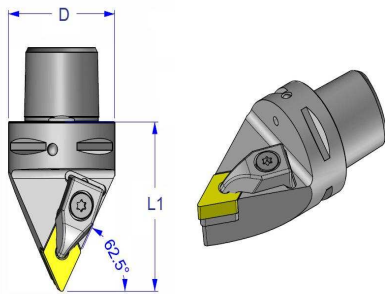
KS 1111

Schlüssel

ARNO®

Kofler®

DDN..



Schnittstell	Artikel-Nr.	F1	L1	D
C4	STS-C4-DDNNN 0055-15	0	55	40
C5	STS-C5-DDNNN 0060-15	0	60	50
C6	STS-C6-DDNNN 0065-15	0	65	63
HSK-T63	STS-HSK-T63-DDNNN 0075-15	0	75	63

E-Teile

KD2222

Klemme

M4,5X12-T15

Schraube

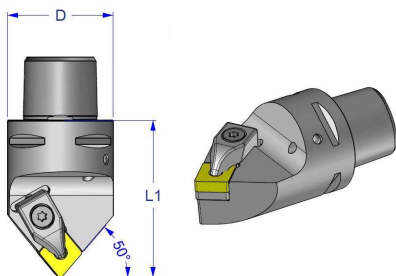
DN15T3-D

U-Platte

KS 1111

Schlüssel

DCM..



Schnittstell	Artikel-Nr.	F1	L1	D
C4	STS-C4-DCMNN 0060-12	0	60	40
C5	STS-C5-DCMNN 0060-12	0	60	50
C6	STS-C6-DCMNN 0065-12	0	65	63
HSK-T63	STS-HSK-T63-DCMNN 0075-12	0	75	63

E-Teile

KD2222

Klemme

M4,5X12-T15

Schraube

CN12T3-D

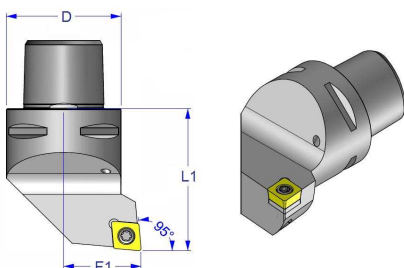
Unterlage

KS 1111

Schlüssel

HSK-T und Capto-Katalog - S-Klemmung

SCL..



Schnittstell	Artikel-Nr.	F1	L1	D
C4	STS-C4-SCLCR/L 27050-09	27	50	40
C5	STS-C5-SCLCR/L 35060-09	35	60	50
C6	STS-C6-SCLCR/L 45065-09	45	65	63
HSK-T63	STS-HSK-T63-SCLCR/L 45065-09	45	65	63
HSK-T63	ST-SCLCL 12 (STAMA)	20	130	63

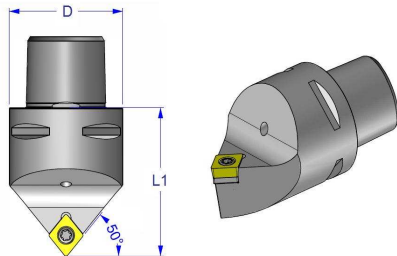
WSP

ETL-US 1111

ETL-GBS 1111

ETL-SS1111

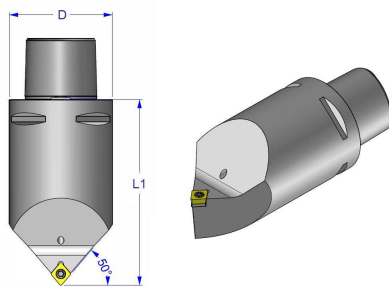
SCM..



Schnittstell	Artikel-Nr.	F1	L1	D
C4	STS-C4-SCMCN 0050-09	0	50	40
C5	STS-C5-SCMCN 0060-09	0	60	50
C6	STS-C6-SCMCN 0065-09	0	65	63
HSK-T63	STS-HSK-T63-SCMCN 0070-09	0	70	63

WSP	E-Teile
CC.T 09T3..	ETL-US 1111
	ETL-GBS 1111
	ETL-SS1111

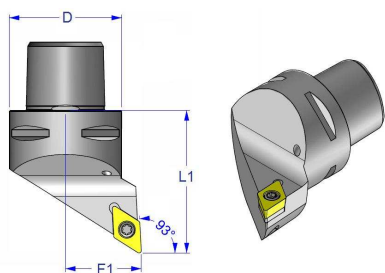
SCM..



Schnittstell	Artikel-Nr.	F1	L1	D
C4	STS-C4-SCMCN 00115-12	0	115	40
C5	STS-C5-SCMCN 00115-12	0	115	50
C6	STS-C6-SCMCN 00115-12	0	115	63
HSK-T63	STS-HSK-T63-SCMCN 00115-12	0	115	63

WSP	E-Teile
CC.T 1204..	ETL-US 1221
	ETL-GBS 1221
	ETL-SS 1221

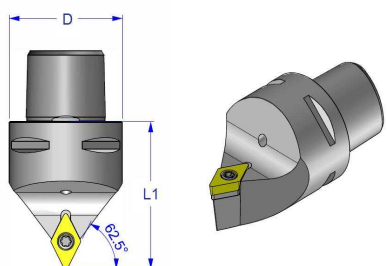
SDJ..



Schnittstell	Artikel-Nr.	F1	L1	D
C4	STS-C4-SDJCR/L 27050-11	27	50	40
C5	STS-C5-SDJCR/L 35060-11	35	60	50
C6	STS-C6-SDJCR/L 45065-11	45	65	63
HSK-T63	STS-HSK-T63-SDJCR/L 45075-11	45	75	63
HSK-T63	ST-SDUCL 11 (STAMA)	20	130	63

WSP	E-Teile
DC.T 11T3..	ETL-US 2311
	ETL-GBS 1111
	ETL-SS 1111

SDN..



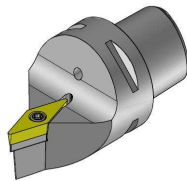
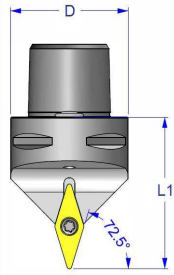
Schnittstell	Artikel-Nr.	F1	L1	D
C4	STS-C4-SDNCN 0050-11	0	50	40
C5	STS-C5-SDNCN 0060-11	0	60	50
C6	STS-C6-SDNCN 0065-11	0	65	63
HSK-T63	STS-HSK-T63-SDNCN 0070-11	0	70	63

WSP	E-Teile
DC.T 11T3..	ETL-US 2311
	ETL-GBS 1111
	ETL-SS 1111

ARNO®

Kofler®

SVV..

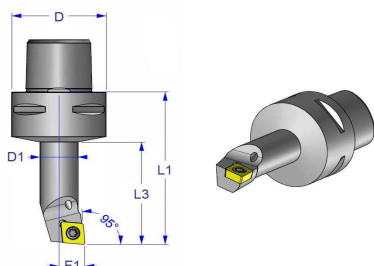


Schnittstell	Artikel-Nr.	F1	L1	D
C4	STS-C4-SVVCN 0050-16	0	50	40
C5	STS-C5-SVVCN 0060-16	0	60	50
C6	STS-C6-SVVCN 0065-16	0	65	63
HSK-T63	STS-HSK-T63-SVVCN 0070-16	0	70	63

WSP	E-Teile
VC.T 1604..	ETL-US 6522
	ETL-GBS 1111
	ETL-SS 1111

HSK-T und Capto-Katalog - S-Klemmung Innenbearbeitung

SCL..

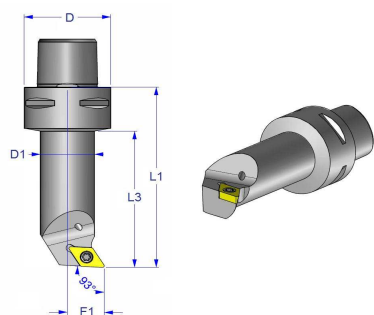


Schnittstelle	Artikel-Nr.	F1	L1	D1	L3	D	Dmin
C4	STS-C4-SCLCR/L 11070-09	11	70	16	47	40	20
C4	STS-C4-SCLCR/L 13080-09	13	80	20	57	40	25
C4	STS-C4-SCLCR/L 17090-12	17	90	25	68	40	32
C5	STS-C5-SCLCR/L 17090-09	17	90	25	68	50	32
C6	STS-C6-SCLCR/L 17090-12	17	90	25	65	63	32
HSK-T63	STS-HSK-T63-SCLCR/L 11090-09	11	90	16	47	63	20

WSP	E-Teile
CC.T 09T3..	ETL-US 1111
	ETL-GBS 1111
	ETL-SS1111

WSP	E-Teile
CC.T 1204..	ETL-US 1221
	ETL-GBS 1111
	ETL-SS 1221

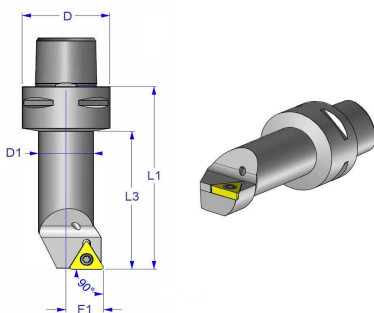
SDU..



Schnittstelle	Artikel-Nr.	F1	L1	D1	L3	D	Dmin
C3	STS-C3-SDUCR/L 13075-11	13	75	20	59	32	25
C3	STS-C3-SDUCR/L 17090-11	17	90	25	74	32	32
C4	STS-C4-SDUCR/L 17090-11	17	90	25	68	40	32
C5	STS-C5-SDUCR/L 13080-11	13	80	20	56	50	25
C6	STS-C6-SDUCR/L 17090-11	17	90	25	65	63	32
HSK-T63	STS-HSK-T63-SDUCR/L 13098-11	13	98	20	90	63	25

WSP	E-Teile
CC.T 09T3..	ETL-US 1111
	ETL-GBS 1111
	ETL-SS1111

STF..

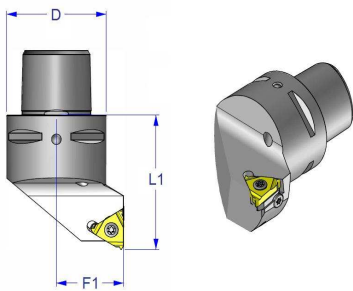


Schnittstelle	Artikel-Nr.	F1	L1	D1	L3	D	Dmin
C4	STS-C4-STFCR/L 17090-16	17	90	25	68	40	32
C5	STS-C5-STFCR/L 17090-16	17	90	25	67	50	32
C6	STS-C6-STFCR/L 22110-16	22	110	32	86	63	40
HSK-T63	STS-HSK-T63-STFCR/L 17110-16	17	110	25	68	63	32

WSP	E-Teile
TC.T 16T3..	ETL-US 5511
	ETL-GBS 1111
	ETL-SS 1111

HSK-T und Capto-Katalog - Gewindewerkzeuge

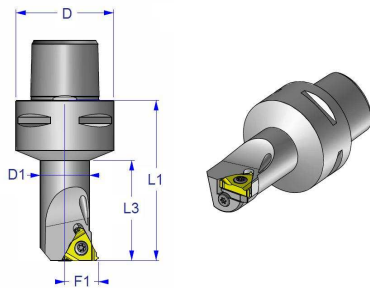
Gewinde aussen



Schnittstelle	Artikel-Nr.	F1	L1	D
C4	STS-C4-AL 27-3R/L	27	50	40
C5	STS-C5-AL 35-3R/L	35	60	50
C6	STS-C6-AL 45-3R/L	45	65	63
HSK-T63	STS-HSK-T63-SER/L 45065-16	45	65	63
HSK-T63	ST-AL16R	16	130	63

WSP	E-Teile
16ER	U-Platte YE3 (rechts)
	U-Platte YI3 (links)
	Schraube SA3T
	SY3T (Schraube für U-Platte)

Gewinde Innen

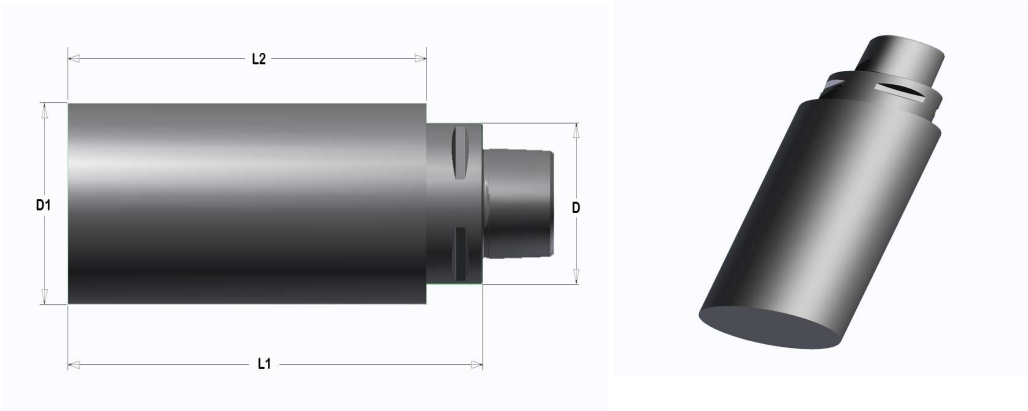


Schnittstelle	Artikel-Nr.	F1	L1	D1	L3	D	Dmin
C4	STS-C4-AVR 14-3 R/L	14	64	20	40	40	24
C5	STS-C5-AVR 14-3 R/L	14	64	20	40	50	24
C6	STS-C6-AVR 16-3 R/L	16	75	25	53	63	29
HSK-T63	STS-HSK-T63-AVR 16-3 R/L	16	79	25	53	63	29

WSP	E-Teile
16IR	U-Platte YI3 (rechts)
	U-Platte YE3 (links)
	Schraube SA3T
	SY3T (Schraube für U-Platte)

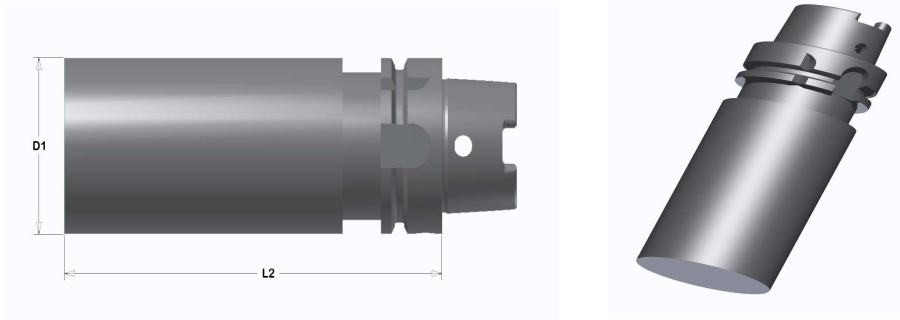
HSK-T und Capto-Katalog - Aufnahmen

**Capto-Rohlinge - vergütet auf 1250-1350N/qmm
Anschluß 60 HRC**



Schnittst.	Artikel-Nr.	D1	L1	L2	D
C3	STS-R-C3-D40X110	40	110	95	32
C3	STS-R-C3-D50X125	50	125	110	32
C3	STS-R-C3-D80X60	80	60	45	32
C3	STS-R-C3-D100X70	100	70	55	32
C4	STS-R-C4-D40X95	40	95	75	40
C4	STS-R-C4-D63X165	63	165	145	40
C4	STS-R-C4-D80X75	80	75	55	40
C4	STS-R-C4-D100X85	100	85	65	40
C5	STS-R-C5-D50X125	50	125	105	50
C5	STS-R-C5-D80X175	80	175	155	50
C5	STS-R-C5-D100X80	100	80	60	50
C5	STS-R-C5-D120X90	120	90	70	63
C6	STS-R-C6-D80X195	80	195	173	63
C6	STS-R-C6-D120X85	120	85	63	63
C6	STS-R-C6-D130X95	130	95	73	63
C8	STS-R-C8-D80X200	80	200	170	80
C8	STS-R-C8-D120X160	120	160	130	80
C8	STS-R-C8-D130X90	130	90	60	80

**HSK-T-Rohlinge - vergütet auf 1250-1350N/qmm
Anschluß 60 HRC**



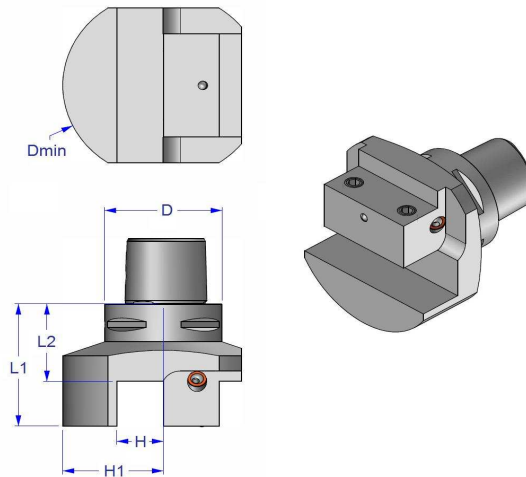
Schnittste	Artikel-Nr.		D	L2
HSK-T63	STS-R-HSK-T63-D63X160		63	160
HSK-T63	STS-R-HSK-T63-D80X110		80	110
HSK-T63	STS-R-HSK-T63-D120X90		120	90

**HSK-A-Rohlinge - vergütet auf 1250-1350N/qmm
Anschluß 60 HRC**

Schnittste	D		Artikel-Nr.	L2
HSK-A40	40		STS-R-HSK-A40-D40X135	40
HSK-A50	53		STS-R-HSK-A50-D53X150	150
HSK-A50	70		STS-R-HSK-A50-D70X110	110
HSK-A63	63		STS-R-HSK-A63-D63X130	130
HSK-A63	63		STS-R-HSK-A63-D63X160	160
HSK-A63	105		STS-R-HSK-A63-D105X200	200
HSK-A100	100		STS-R-HSK-A100-D100X120	120
HSK-A100	100		STS-R-HSK-A100-D100X200	200
HSK-A100	145		STS-R-HSK-A100-D145X200	200

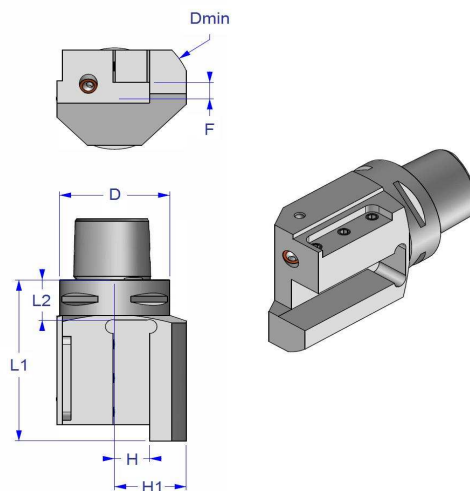
HSK-T und Capto-Katalog - Aufnahmen

Halteaufnahme radial



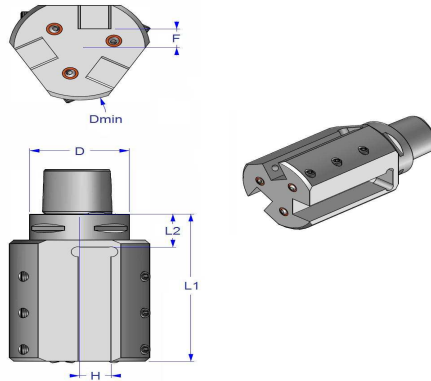
Schnittst.	Artikel-Nr.	H	L1	H1	L2	Dmin	D
C6	STS-ASHA-38060-20	20	60	44,5	40	89	63
C6	STS-ASHA-45071-25	25	71	54	45	108	63
HSK-T63	STS-HSK-T63-ASHA-38075-20	20	75	44,5	55	89	63
HSK-T63	STS-HSK-T63-ASHA-45086-25	25	86	54	60	108	63

Halteaufnahme axial



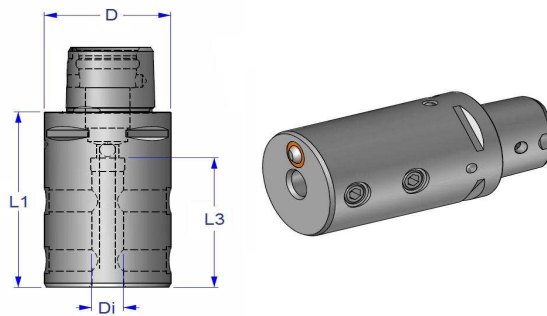
Schnittst.	Artikel-Nr.	H	L1	H1	L2	F	Dmin	D
C6	STS-ASHR/L-30100-20	20	100	41,0	25	10	89	63
C6	STS-ASHR/L-38130-25	25	130	50	28	13	108	63
HSK-T63	STS-HSK-T63-ASHR/L-30115-20	20	115	41,0	45	10	89	63
HSK-T63	STS-HSK-T63-ASHR/L-38145-25	25	145	50	48	13	108	63

Halteraufnahme axial 3-fach



Schnittst.	Artikel-Nr.	H	L1	L2	F	Dmin	D
C6	STS-ASHR/L3-36125-20	20	125	28	16	89	63
C6	STS-ASHR/L3-44130-25	25	130	30	19	108	63
HSK-T63	STS-HSK-T63-ASHR/L-36140-20	20	140	43	16	89	63
HSK-T63	STS-HSK-T63-ASHR/L-44145-25	25	145	45	19	108	63

Bohrstangenhalter



Schnittst.	Artikel-Nr.	Di	D1	L1	L3	D
C4	STS-C4-D10-065	10	40	65	48	40
C4	STS-C4-D12-070	12	40	70	52	40
C4	STS-C4-D16-070	16	40	70	55	40
C4	STS-C4-D20-075	20	45	75	58	40
C5	STS-C5-D10-070	10	40	70	48	50
C5	STS-C5-D12-075	12	40	75	52	50
C5	STS-C5-D16-080	16	40	80	55	50
C5	STS-C5-D20-080	20	45	80	60	50
C6	STS-C6-D12-075	12	40	75	52	63
C6	STS-C6-D16-080	16	40	80	55	63
C6	STS-C6-D20-080	20	45	80	58	63
C6	STS-C6-D25-080	25	50	80	58	63
C6	STS-C6-D32-085	32	60	85	63	63
HSK-T63	STS-HSK-T63-D12-080	12	40	80	52	63
HSK-T63	STS-HSK-T63-D16-080	16	40	80	55	63
HSK-T63	STS-HSK-T63-D20-085	20	45	85	58	63
HSK-T63	STS-HSK-T63-D25-085	25	50	85	58	63
HSK-T63	STS-HSK-T63-D32-090	32	62	90	63	63

